



- 受け身の不定詞
- 受け身の進行形

### 1 Choose the appropriate answer.

- (1) The hospital is in a convenient (            ) near the Central Station.  
a. strip            b. location            c. life            d. panel
- (2) You can't step into the area surrounded by the ropes. It is regarded as a (            ) place.  
a. holy            b. popular            c. everyday            d. lucky
- (3) The soccer game was (            ) to a lot of countries around the world.  
a. published            b. described            c. broadcast            d. attracted

### 2 Put the words in bracket into the correct order.

- (1) その映画は日本でも世界中でも好評だった。  
The movie was well ( and / in / received / around / Japan / the world / both ).  
The movie was well \_\_\_\_\_.
- (2) 今年の学園祭のプログラムは昨年作られたものに基づいている。  
The program for the school festival this year ( made / is / year / on / the one / based / last ).  
The program for the school festival this year \_\_\_\_\_.
- (3) マイクはコーチたちにチームで一番の選手だと見なされている。  
Mike ( to / on / the best / considered / be / the team / player / is ) by the coaches.  
Mike \_\_\_\_\_ by the coaches.

### 3 Choose a part that is wrong and correct it.

- (1) ① The book, that ② was written ③ in the 19th century, ④ is still very popular.  
Choice: \_\_\_\_\_ Correction: \_\_\_\_\_
- (2) ① How long ② have you ③ being ④ waiting here?  
Choice: \_\_\_\_\_ Correction: \_\_\_\_\_

### 4 Read the following passage and answer the questions below.

*Lucky Star*, ( ① ) broadcast in 2007, was a great hit. Like many fans of novels, movies, and TV dramas, anime fans visit the sites where the stories were set. These trips are called “Anime Pilgrimages.” The sites attract fans, both from Japan and from around the world.

#### Q1. Choose the appropriate words for the blank ①.

- a. that was    b. who was    c. which was    d. what was

#### Q2. According to the passage above, what are “Anime Pilgrimages?”

- a. They are anime fans who visit the sites where anime stories were set.  
b. They are the sites which attract anime fans from around the world.  
c. They are the sites where anime stories were set.  
d. They are trips to visit the sites where the anime stories were set.

### 1 Put the appropriate word below into each blank. (Change the form if necessary.)

- (1) A large crowd ( ) to the entrance when the store opened at ten.
- (2) The big earthquake last year caused serious damage to the local ( ).
- (3) We had breakfast, and ( ) we went for a nice walk.
- (4) English is a language ( ) spoken throughout the world.

[ economy / statistics / widely / rush / notice / afterwards ]

### 2 Put the appropriate word into each blank.

- (1) 暑さのせいで、プールの入場者数が1日2,000人以上にはね上がった。  
The number of visitors to the swimming pool ( ) ( ) over 2,000 a day because of the hot weather.
- (2) そのホテルはドイツの城をモデルにして作られた。  
The hotel was ( ) ( ) a castle in Germany.
- (3) ネットニュースによると、台風が関東地方を直撃するそうだ。  
( ) ( ) the Internet news, the typhoon will directly hit the Kanto area.

### 3 Choose a part that is wrong and correct it.

- (1) Ellen ① would like ② to invite ③ to his birthday party ④ next week.  
Choice: \_\_\_\_\_ Correction: \_\_\_\_\_
- (2) ① How did the custom ② come to ③ be knowing so ④ widely to the Japanese people?  
Choice: \_\_\_\_\_ Correction: \_\_\_\_\_
- (3) ① The biggest monkey ② seems to ③ consider ④ as the leader of the group.  
Choice: \_\_\_\_\_ Correction: \_\_\_\_\_

### 4 Read the following passage and answer the questions below.

( ① ) Washinomiya Shrine is a famous “Anime Pilgrimage” site. ( ② ) A shrine in *Lucky Star* was modeled on it. Soon after the connection came to be widely known, many fans rushed there. ( ③ ) The number of New Year’s visitors to the shrine increased from about 130,000 in 2007 to 300,000 in 2008. It reached 470,000 in 2011. ( ④ )

Q1. Where does the following sentence fit into the passage? Choose the appropriate part from ① to ④.

It is estimated that the “pilgrimages” added about 3.1 billion yen to the local economy in the ten years following the broadcast.

Q2. Choose the appropriate explanation of the underlined words.

- a. the connection between a shrine in *Lucky Star* and the fans of *Lucky Star*
- b. the connection between a shrine in *Lucky Star* and Washinomiya Shrine
- c. the connection between Washinomiya Shrine and the fans of *Lucky Star*
- d. the connection between Washinomiya Shrine and an “Anime Pilgrimages” site

**1** Connect each word and phrase that have similar meanings with a line.

- (1) neighborhood · to make someone angry or upset  
 (2) noisy · the way that someone does things in  
 (3) annoy · someone who lives in a place  
 (4) resident · making a lot of noise  
 (5) behavior · an area of a town or a city

**2** Put the appropriate word into each blank.

(1) 母は友人たちとさまざまな活動を楽しんでいます。

My mother enjoys a ( ) ( ) activities with her friends.

(2) メグは役に立つ情報を求めて、図書館で何時間も過ごした。

Meg spent hours in the library in ( ) ( ) some useful information.

(3) 朝食にコーヒーを飲む人もいれば、紅茶を飲む人もいる。

( ) people drink coffee for breakfast, and ( ) drink tea.

**3** Choose a part that is wrong and correct it.

(1) ① These pictures ② took ③ by his daughter ④ last spring.

Choice: \_\_\_\_\_ Correction: \_\_\_\_\_

(2) ① How many onions ② do we need ③ making curry ④ for five people?

Choice: \_\_\_\_\_ Correction: \_\_\_\_\_

(3) ① As ② the sun rising, ③ it ④ got warmer and warmer.

Choice: \_\_\_\_\_ Correction: \_\_\_\_\_

**4** Read the following passage and answer the questions below.

Many fans visit “Anime Pilgrimage” sites to buy souvenirs and to take photos. ( ① ) As the number of “Pilgrims” grows, some of them cause problems such as taking photos in restricted areas, walking around local neighborhoods, and being noisy. ( ② ) However, more visitors now try to communicate with local people. ( ③ ) As their communication continues, many of visitors want to do something for the local areas. ( ④ )

Q1. Where does the following sentence fit into the passage? Choose the appropriate part from ① to ④.

Such behavior annoys the residents.

Q2. According to the passage above, which of the following sentences is true?

- a. Many fans visit “Anime Pilgrimage” sites to take photos in restricted areas.  
 b. Local residents don't mind “Pilgrims” though their manners are bad.  
 c. The number of anime fans trying to get along with local residents is increasing.  
 d. Many of visitors want to contribute the local areas by buying souvenirs.

**1 Choose the appropriate answer.**

- (1) The country has survived the (            ) crises.  
a. noisy            b. economic            c. positive            d. favorite
- (2) The mountain has great (            ) for producing more gold.  
a. information            b. statistics            c. development            d. potential
- (3) A large group of (            ) from abroad got off the sightseeing bus.  
a. tourists            b. neighborhood            c. residents            d. culture
- (4) Friendship should be based on (            ) respect and trust.  
a. social            b. different            c. restricted            d. mutual

**2 Put the words in bracket into the correct order.**

- (1) ビルはクラスの他の生徒たちとうまく交流しているようだ。  
Bill ( with / seems / interact / other / to / well / the ) students in his class.  
Bill \_\_\_\_\_ students in his class.
- (2) 電話は意思の伝達に重要な役割を果たしてきた。  
The telephone ( in / played / communication / role / has / an important ).  
The telephone \_\_\_\_\_.

**3 Choose the appropriate word(s) in each sentence.**

- (1) These tennis courts are ( use / used / being used ) by the junior team right now.
- (2) A new stadium ( is building / is being built / is been building ) now beside the old one.
- (3) The front door ( is repaired / was repaired / was being repaired ) when I got home.

**4 Read the following passage and answer the questions below.**

As many of the *Lucky Star* fans repeatedly visited Washinomiya Shrine, they became fans of the area, too. ( ① ), the local people have tried to understand the anime better. Mutual understanding has had a positive economic effect. Also, “Anime Pilgrimages” can attract tourists from abroad. These foreigners often have a strong interest in Japanese culture and in the locations of their favorite anime stories. “Anime Pilgrimages” have great potential for promoting regional development in Japan.

**Q1. Choose the appropriate word(s) for the blank ①.**

- a. However            b. Meanwhile            c. Even though            d. In the beginning

**Q2. Why do “Anime Pilgrimages” have great potential for promoting regional development in Japan? (You may choose more than one option.)**

- a. Because all anime fans become fans of the area through “Anime Pilgrimages.”  
b. Because “Anime Pilgrimages” can have a positive economic effect.  
c. Because “Anime Pilgrimages” can attract a lot of tourists from both within Japan and abroad.  
d. Because all “Anime Pilgrims” are interested in Japanese culture.

# 1 Read the following passage and answer the questions below.

Anime-related events are still held at Washinomiya Shrine and at other “Anime Pilgrimage” sites. A variety ( ① ) souvenirs, including character goods, are sold there. Many fans visit the sites to buy souvenirs and to take photos.

Sadly, the growing number of “Anime Pilgrims” can also cause problems. Some fans go into restricted areas ( ② ) permission to take pictures. Others walk around local neighborhoods ( ③ ) search of better photo spots, and they are often very noisy. Such behavior annoys the residents.

Certainly, some “Anime Pilgrims” do not respect local customs and lifestyles. However, more and more visitors now try to communicate with local people. As their communication continues, many of the visitors want to do something for the local areas.

Even though *Lucky Star* finished airing in 2007, fans have continued to interact ( ④ ) local people in the Washinomiya Shrine area. In the beginning, “Anime Pilgrims” visited it just to try to experience the world of *Lucky Star*. Later, (a)as they came back again and again, they became fans of the area, too. Meanwhile, local people have tried to understand the anime better, and (b)they have willingly accepted “Pilgrims.” Mutual understanding has had a very positive economic effect as well.

“Anime Pilgrimages” also play an important role ( ⑤ ) attracting tourists from abroad. Those who visit “holy sites” often have a strong interest in Japanese culture and in the locations of their favorite anime stories. Information about “Anime Pilgrimages” is now (c)( many / provided / languages / in / by / different / being ) local people, on websites and social media. “Anime Pilgrimages” have great potential for promoting regional development in Japan.

(1) Put the appropriate words into blanks ①~⑤.

① (            )    ② (            )    ③ (            )    ④ (            )    ⑤ (            )

(2) Choose one of the following sentences that has the same usage as (a).

- a. He arrived as the bus was leaving.                      b. As it was raining, I stayed home.  
c. As time passed, the sky cleared up.                      d. Do as I do.

(3) What does the word (b) refer to? \_\_\_\_\_

(4) Put the words in underlined part (c) into the correct order.

Information about “Anime Pilgrimages” is now \_\_\_\_\_  
\_\_\_\_\_ local people, on websites and social media.

(5) What kind of behavior of some “Anime Pilgrims” annoys local residents?

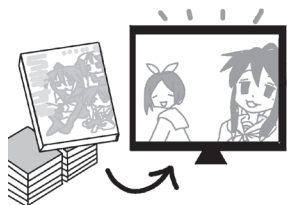
- a. buying souvenirs                                      b. going into residents’ houses  
c. walking around the shrine                              d. being very noisy

(6) According to the passage above, one fact is that (     ).

- a. anime-related events are still being held at Washinomiya Shrine  
b. some “Anime Pilgrims” do not respect local customs and lifestyles  
c. those who visit “holy sites” often have a strong interest in Japanese culture  
d. “Anime Pilgrimages” have great potential for promoting regional development in Japan

**1** Four English sentences [A] - [D] will be read for the following pictures. Choose the most appropriate one to describe the contents of each picture.

(1)



[A] [B] [C] [D]

(2)



[A] [B] [C] [D]

(3)



[A] [B] [C] [D]

(4)



[A] [B] [C] [D]

**2** Listen to the short dialogues and the questions about them and choose the most appropriate answer.

- (1) [A] It was broadcast long ago.  
[B] The story mainly appeals to girls.  
[C] He has already read the original book.  
[D] The comic version is more interesting.
- (2) [A] She plans to pray at her favorite shrine.  
[B] She plans to annoy people who live nearby.  
[C] She plans to take some photos where an anime was set.  
[D] She plans to see Kenji with her friends.
- (3) [A] The poor behavior of tourists.  
[B] Ways to attract more tourists.  
[C] Opening gardens to tourists.  
[D] How to communicate with tourists.

**3** Listen to the dialogue and choose the most appropriate response to the last sentence.

- ア Of course! They are people who try to visit all the shrines that appear on TV.
- イ I think they are people who search for locations to include in their new anime.
- ウ Ah, yes, they are people who visit locations where their favorite anime stories were set.
- エ That's great! They can help the local area to develop economically.



**1** 次の英文を読んで、各問に答えよ。

(神戸学院大学)

The number of tourists from overseas to Japan is increasing year  year. In 2016 the total reached the government's targeted number of 20,000,000. Travel agencies had made various plans for these non-Japanese, and hotels and restaurants provide these people with dishes depending on each nationalities' tastes. These efforts have been successful, and many non-Japanese have visited Japan more than once.

Then, can ordinary Japanese citizens react (イ)appropriately to international tourists? Many Japanese university students have experience just answering, "I don't know" when asked about the way to an international tourist destination. "I don't know" sounds unfriendly, especially to non-Japanese people who come from a country where many people are friendly to strangers.

So, what would these foreigners reply if they were put in the reverse situation? For example, when asked about the way to a sightseeing spot, they would say something like, "I've visited it before, but (ウ)the directions were so complicated that I took a roundabout route." Also, when asked about a bus stop, they would reply by saying something like, "I often see buses run along this road, but I have no idea where the bus stop is. I commute to the office by car. I'll ask someone else who lives here." Besides that, when asked about the way to a hotel, they might say, "It's a long way from here. Would you like me to call a taxi for you?" After you recognize that friendly non-Japanese are used to having this kind of conversation, try to imagine how they would feel to hear your response. You will become aware that you should at least say, "I'm afraid I'm a  here myself." If you have some free time, you are expected to say, "I'll ask someone else. Wait a moment, please," or "I'm going the same way, so I'll take you there."

When communicating with international tourists, it is not enough to convey accurate information briefly. While taking into account that they expect a friendly attitude from Japanese people, you need to come up with words which are suitable for each situation.

(Junko Kobayashi (2019) *Coping with Globalization* を参考に作成)

問1 空所  を満たすのに最も適切なものを、A～Dのうちから1つ選べ。

- A and                      B in                      C for                      D by

問2 下線部(イ)の意味に最も近いものを、A～Dのうちから1つ選べ。

- A properly                      B oppositely                      C differently                      D similarly

問3 下線部(ウ)の意味に最も近いものを、A～Dのうちから1つ選べ。

- A 道がとても混んでいたのが、迷子になった。  
B 道があまり混んでいなかったのが、車道を歩いた。  
C 道順がとても複雑だったので、遠回りした。  
D 目的地までとても遠かったのが、近道をした。

問4 空所  を満たすのに最も適切なものを、A～Dのうちから1つ選べ。

- A stranger                      B resident                      C student                      D commuter

問5 次の書き出しに続く最も適切なものを、A～Dのうちから1つ選べ。

Many Japanese university students have experience \_\_\_\_\_.

- A giving replies which sounded unfriendly to the tourists  
B giving replies which welcomed the tourists  
C giving the wrong information to the tourists  
D showing the tourists around the sightseeing spots

問6 本文の内容に合致するものを、A～Dのうちから1つ選べ。

- A Japanese who are friendly to strangers would give detailed explanations about the place.  
B Japanese who are friendly to strangers would say that they didn't know the place.  
C Non-Japanese who are friendly to strangers would add personal comments so that they can show friendly feelings.  
D Non-Japanese who are friendly to strangers would use technical terms when explaining the place.